

Alma X PROLLENIUM®

REVANESSE®

RESHAPING THE  
AESTHETIC EXPERIENCE

Alma X PROLLENIUM®

# SHAPING THE FUTURE OF AESTHETICS **TOGETHER**

Alma's journey has been characterized by constant evolution, partnerships, and a deep-rooted commitment to delivering reliable, advanced technological solutions that have won the hearts of countless customers globally.

The collaboration: Alma X PROLLENIUM

Unites two leaders of the aesthetics industry, each bringing a legacy of innovation, excellence, and a profound commitment to enhancing customer wellbeing worldwide.

This partnership signifies a groundbreaking milestone, merging Alma's award-winning expertise in energy-based devices with Prollemium's pioneering advances in injectables. Together, they are setting new industry standards, fueled by a shared commitment to safety, effectiveness, and a mission to profoundly impact lives. This collaboration promises to deliver holistic solutions that combine the best of energy-based technologies and groundbreaking injectable treatments, ensuring optimal outcomes for both customers and their patients.

# Customer-focused and innovation-driven

REVANESSE® by PROLLENIUM®

## Customers' voice matters!

Placing customers at the core of operations, Prollemium values their input and insights. Fostering an ongoing dialogue by actively listening, responding, and taking action!

## Proudly Canadian-made

REVANESSE® dermal fillers are entirely developed and manufactured in Canada. First manufacturer of hyaluronic acid fillers in all of North America.

## FDA approved

Founded in 2002, Prollemium is one of the select few companies to have received FDA approval for its facilities.

## Experts and innovators in dermal fillers

The in-house Research and Development team works continuously to innovate and improve formulations and technologies. So passionate about dermal fillers, that's all they do!

How is REVANESSE® made?

# 01

REVANESSE® COMBINES HIGH MOLECULAR WEIGHT (HMW) HYALURONIC ACID (HA) WITH LOW LEVELS OF 1,4-BUTANEDIOL DIGLYCIDYL ETHER (BDDE).

HMW HA closely resembles the body's own HA, needing less BDDE to stabilize and less likely to be recognized as a foreign body by the immune system.<sup>1</sup>

# 02

THE GEL UNDERGOES A PROPRIETARY WET MILLING PROCESS RESULTING IN SPHERICAL PARTICLES.

Spherical particles typically have less surface area. Inflammatory reactions are more pronounced for irregular shaped particles or those with more surface area.<sup>2</sup>

# 03

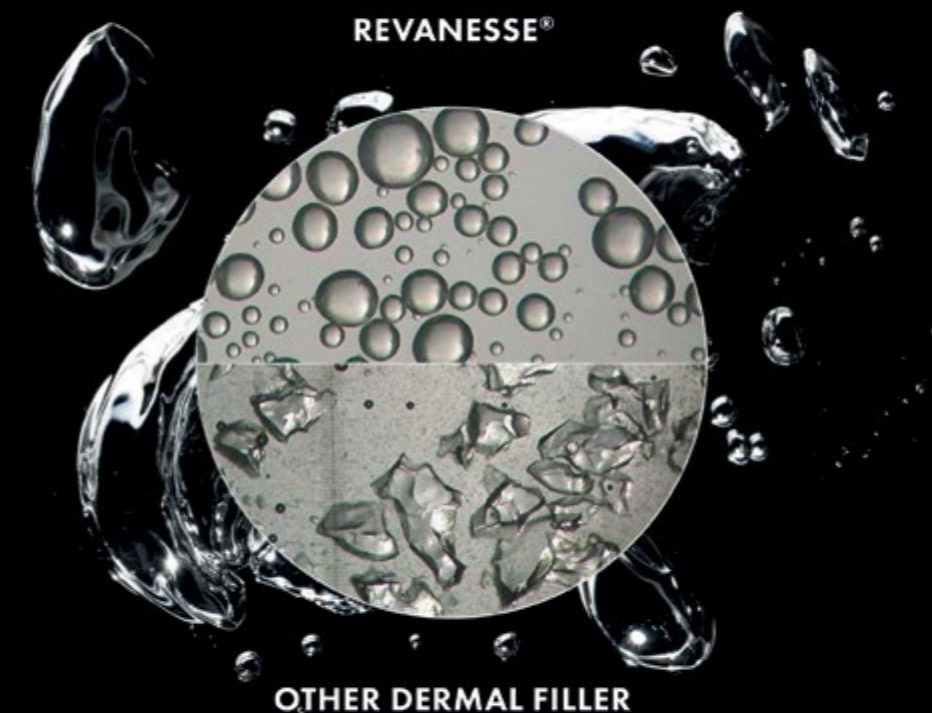
DIFFERENT RHEOLOGIES ARE ACHIEVED BY ALTERING SEVERAL PROPERTIES OF OUR HA GELS.

By tailoring our approach to specific indications, we adjust the degree of cross-linking, particle size, and incorporate linear HA as needed. This level of customization allows us to create distinct properties for specific indications.

# 04

OPTIMIZED PURIFICATION PROCESS FOR THOROUGH REMOVAL OF RESIDUAL BDDE & TOXINS.

Our unique 7-day dialysis process creates a purer product, along with a neutralized pH and balanced osmolality. This step ensures the 'what you see is what you get' performance we are known for.



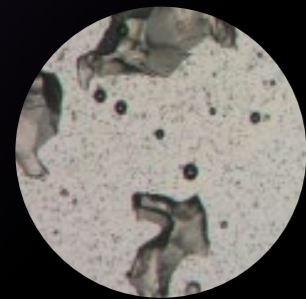
1. Edsman K, Nord LI, Ohrlund A, et al. Dermatol Surg. 2012;38:1170-1179.  
2. Laeschke K. Semin Cutan Med Surg. 2004, 23:214.



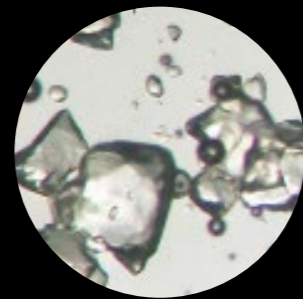
# Designed for less swelling and less pain

## Smooth, spherical and uniform HA particles

Smooth and spherical particles promote better tissue integration and may reduce the risk of foreign body reactions.<sup>1</sup>



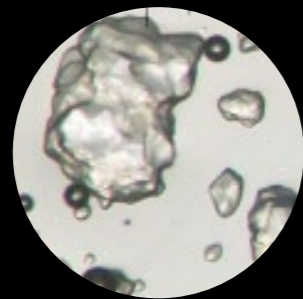
COMPARATOR A



COMPARATOR B



REVANESSE® ULTRA™



COMPARATOR C

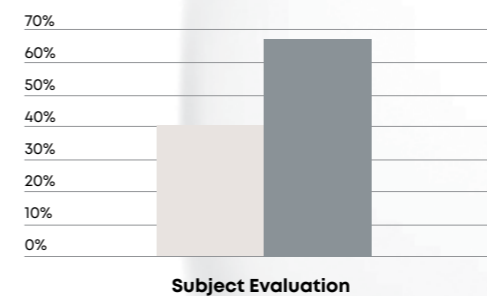


COMPARATOR D

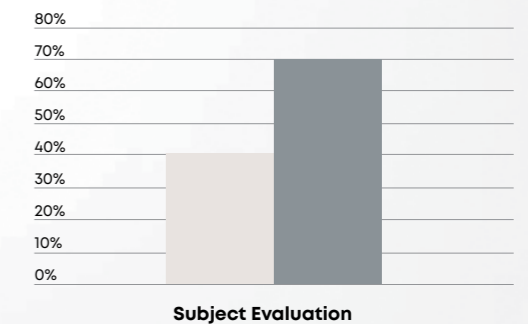
In a head-to-head clinical trial, more subjects treated with Restylane® reported pain at injection site, in comparison to subjects treated with Revanesse® Ultra™.

Similar results were observed for swelling, where more subjects treated with Restylane® reported swelling at injection site, in comparison to subjects treated with Revanesse® Ultra™\*.

proportion of subjects reporting pain at injection site\*



Proportion of subjects reporting swelling at injection site\*



● Restylane® (N=163)\* ● Ultra™ (N=163)\*

1. Laeschke K. Semin Cutan Med Surg. 2004, 23:214.

\*Data on file, Prolenium, Revanesse® Ultra™ Clinical Study Report SYM 2014-02: A Multicenter, Double-Blind, Randomized, Split-Face Study to Evaluate the Safety and Efficacy of Revanesse® Ultra™ Versus Restylane® for the Correction of Nasolabial Folds. Revanesse® Ultra™ is a registered trademark of Prolenium Medical Technologies Inc. Restylane® is a registered trademark of Nestlé Skin Health S.A.

# A comprehensive range specifically tailored to meet your needs

1.2 mL syringes  
providing an extra  
**20%**  
volume per syringe

### Patient's value

More product = More treatment options, patient's satisfaction and long-term loyalty.

### Clinician's value

More treatment options, better outcomes.

### Economic value

Get superior outcomes while maximizing cost-effectiveness.



●● Forehead lines

●○● Cheekbones

●●● Perioral lines

● Vermilion border & philtral column

●● Lips

● Brow

●●○ Temples\*

● Tear troughs\*

●● Nasolabial folds

●● Submalar area

●● Marionette lines

●○ Jawline

●●○ Chin

● PURE™+  
Bio-revitalize

● REVISE™+  
Fill & Rejuvenate

● KISS™+  
Refresh & Rejuvenate

● ULTRA™+  
Fill & Volumise

● CONTOUR™+  
Volumise & Sculpt

● OUTLINE™+  
Structure & Lift








○ SHAPE™+  
Project & Lift

\* HA fillers injections administered to these specific areas should only be performed by a qualified and experienced professional.



# REVANESSE® collection of HA dermal fillers



	 REVANESSE PURE™+	 REVANESSE REVISE™+	 REVANESSE KISS™+	 REVANESSE ULTRA™+	 REVANESSE CONTOUR™+	 REVANESSE OUTLINE™+	 REVANESSE SHAPE™+
<b>HA concentration</b>	14 mg / mL	12 mg / mL	25 mg / mL	25 mg / mL	25 mg / mL	25 mg / mL	25 mg / mL
<b>Viscosity</b>	●●●●●	●●●●●	●●●●●	●●●●●	●●●●●	●●●●●	●●●●●
<b>Particles size<sup>1</sup></b>	Non applicable	●	●	●	●	●	●
<b>Lifting capacity<sup>2</sup></b>	Very low	Low	Low	Moderate	Moderate/high	High	Very high
<b>Injection depth<sup>3</sup></b>	Superficial dermis	Superficial to mid dermis	Superficial to mid dermis	Mid-to-deep dermis	Deep dermis to subcutaneous	Deep dermis to subcutaneous	Supra-periosteum
<b>Commonly treated areas</b>	Emerging lines	Tear troughs, Crow's feet & Perioral lines	Lips & Perioral Lines	Submalar areas, Nasolabial folds, Marionette lines & Lips	Cheeks, Chin, Temples	Vermillion Border & Philtral Column & Lips	Cheeks, Jawline & Chin
<b>Nb of syringes &amp; Volume</b>	2 x 1.2 mL	2 x 1.2 mL	2 x 1.2 mL	2 x 1.2 mL	2 x 1.2 mL	2 x 1.2 mL	2 x 1.2 mL
<b>Needle size in the pack</b>	30G	30G	27G	27G	27G	29G/27G*	27G

\* Product availability is subject to variation based on geographical locations and specific regions.  
 1. The artist rendition of the HA particle sizes does not accurately represent the actual size of an HA particle within the associated product.  
 2. Based on the rheological and physicochemical properties of each product.  
 3. Note that product indications may differ in various countries. Treatment areas, injections depth and products selection should be made based on the location and severity of depressions to be corrected and the desired level of correction. Hyaluronic acid fillers injections should only be performed by qualified and trained health care practitioners, under the supervision of qualified physicians, also trained on proper injection techniques and in accordance with all applicable local regulations. Please refer to your local product labelling for complete and detailed information on Indications, Contraindications, Precautions and Warnings.

Alma X PROLLENIUM®

# REVANESSE®



**Distributed by:**

Alma Lasers GmbH  
Nordostpark 100-102  
90411 Nuremberg, Germany  
Tel. + 49 911 / 89 11 29-0  
Fax + 49 911 / 89 11 29-99  
Email: info@almalasers.com

**Manufactured by:**

Prollem Medical Technologies  
138 Industrial Pkwy N,  
Aurora, ON L4G 4C3,  
Canada  
PN99750 Rev00

© 2024 Alma. All rights reserved.  
Alma, its logos are trademarks or registered trademarks of Alma.  
Product specifications are subject to change without notice.

CONNECT WITH ALMA



PBPR07072402\_01